



RSNA 2008  
Personal Learning in the  
Global Community

# New Products & Services

■ The following new products and services are offered in the technical exhibit areas. Consult the RSNA Meeting Guide for the booth number and location of each company.

NEW FOR RSNA 2008  
Technical Exhibition Expands  
to Three Halls

## Wireless, Cassette-Size DR Detector



Carestream Health debuts the first wireless, cassette-size DR detector that can be used with existing wall-stand or table-based Buckys. The CARESTREAM DRX-1 incorporates a console and a wireless 14" by 17" cassette-size detector that provides a rapid, affordable conversion for users of radiographic film or computed radiography systems. It requires no modifications to existing analog equipment. The system is currently a work in progress and is expected to be available in 2009.

## Pediatric Radiography System



Swissray's Pediatric Imaging Package has been developed with renowned children's hospitals. With industry-leading spatial resolution and imaging algorithms

specifically designed for radiation dose reduction, Swissray provides unrivaled image quality with highest-detail detectability for pediatric radiography. The package also includes the fastest system positioning and off-center imaging as well as patient position monitoring with a built-in video camera. With the backlit design of the system's front cover, the ambience in the radiographic room can be enhanced with popular children's cartoons, thus creating a positive experience for young patients.

## Compact Mammography Film Imager



Sony's FilmStation™ mammography film imager model UP-DF750 delivers detailed images in 606 dpi at a print time of 90 sheets per hour. With an advanced thermal printing system and specially engineered blue thermal high-density film, the new printer is optimized for full-field digital mammography applications and designed to help facilities meet Mammography Quality Standards Act regulations. It features vertical and upright positioning, lightweight design and a one-minute warm-up time. The affordable purchase price is among the lowest for any similar printer available today and is supported by an equally low cost of ownership.

## Needle Guidance System



The AccuSITE needle guide by CIVCO is designed specifically for guidance in central line placement procedures. The guide increases first-time success rates during catheter placement procedures. Utilizing a two-part system, the AccuSITE consists

of a custom reusable biopsy bracket and disposable snap-on needle guide. The guide accepts 18, 20 and 21/22 gauge sizes. Each gauge size offers the most complete depths in the industry including .5 cm, 1 cm, 1.5 cm, 2 cm, 2.5 cm, 3 cm and 3.5 cm.

## DICOM Storage Service

RemotePACS.com from DICOM Solutions is an efficient on-demand service that offers limitless storage options, allowing hospitals and imaging centers to store, view and distribute their medical images over the Web. RemotePACS defines teleradiology

services by offering direct immediate access to all patient images anytime, anywhere and allowing hospitals to leverage digital imaging while reducing capital costs for equipment purchase, maintenance and personnel. RemotePACS provides complete access to all imaging needs without the purchase of any equipment. It is the affordable solution to off-site disaster recovery and backup storage.

The information for these new products and services was provided by the manufacturers. Inclusion in this publication should not be construed as a product endorsement by RSNA.

**livefree**

Break away from the limitations of multiple monitors, and expand your vision with the first 6MP Coronis monitor with no central bezel.



## Coronis Fusion 6MP DL

The first integrated single-head workstation you can use as a wide-screen 6MP display OR as two 3MP displays with no center bezel.

Improves your view with...

- **All-in-one versatility:** grayscale and color on just one screen
- **Large-screen ergonomics:** 30-inch display
- **Diagnostic flexibility:** in any modality
- **Superior image quality:** with all the benefits of Coronis, Barco's leading display

You'll wonder how you ever lived without it.

Find out more at  
**RSNA**  
Booth #6210, Hall A

or visit [www.barcomedical.com](http://www.barcomedical.com)





That's the power to perform.

## Connecting Physicians Means Better, Safer Care

Meet Dr. James Jones, Medical Director, Emergency Services, at Southeast Alabama Medical Center (SAMC) in Dothan, Ala.

Overseeing an emergency department that handles 57,000 visits annually, Dr. Jones is always on the go. He wants to increase patient flow, and minimize risk while continuing to provide quality care. Dr. Jones doesn't have time for surprises, and can't afford a breakdown in communication with the Radiology department.

With McKesson, Dr. Jones gets what he wants. SAMC radiologists use McKesson's Horizon Medical Imaging™ PACS to provide better, faster diagnosis of studies for ED patients. They're truly part of his team, affecting real-time care on the front lines. And Dr. Jones wouldn't have it any other way: "We don't have surprises anymore. It's easier to stay connected with our radiologists. And our patients benefit with improved care, with faster care."

Learn more at RSNA. Visit McKesson booth #8328 to hear more about the Southeast Alabama story and how McKesson can connect your radiologists and care team to better, safer care.

[www.mckesson.com/rsna08](http://www.mckesson.com/rsna08)

**MCKESSON**

*Empowering Healthcare*

## Viewing System with Nuclear Medicine Capabilities



New tools for nuclear medicine images and specialized orthopedic and neurosurgical viewing tools will be available on BRIT Vision. BRIT is integrating Invia Medical Imaging Solutions' 4DM-Spect on a Citrix server and, in conjunction with Ten20, is developing tools for orthopedics and neurosurgeons. With the continued integration to OrthoView's templating product, BRIT has the capability to provide a complete digital orthopedic PACS solution. BRIT Vision is a 12-bit DICOM diagnostic workstation for all imaging modalities, including full-field digital mammography.

## Multisite PACS, RIS Architecture



Meta Fusion's innovative, uniquely reliable PACS and RIS architecture supports multisite radiology workflow, multicountry localization, advanced integration with the OsiriX Macintosh DICOM viewer and more. A unique distributed, multiple-server configuration can collaborate across a network to integrate information and maintain workflow in most locations in the event of system failure. With today's popular single, centralized server configurations, an IT problem affects every location, bringing workflow to a halt across the distributed enterprise. This architecture enables unlimited scalability, with new servers added to the network as workloads expand.

## PET/CT System



The GE Healthcare Discovery PET/CT 600 allows physicians to see clinically relevant solutions that will make a difference for

their patients. Options include a scintillator with the highest sensitivity in the industry, the next generation of MotionFree technology to capture detail and precision even in areas subject to motion and advanced information processing and fast reconstruction with the IBM BladeCenter®.

## Mobile Digital Radiography

The Canon CXDI-50G Portable DR system offers thin, lightweight design and has a 14" x 17" imaging area. When combined with a mobile unit, the CXDI-50G can bring digital radiography directly to the patient's bedside. Designed for diverse applications, the compact design is a practical solution for a wide range of room applications that are difficult to perform with fixed devices.

## Line of LCDs



Double Black Imaging's new LCD line consists of a 2 mega pixel monochrome and High-Bright color display, a 3 mega pixel monochrome and High-Bright color display and a 5 mega pixel monochrome display for mammography. This line features higher brightness levels on each LCD, digital uniformity control, 12-bit processing, a retractable front sensor for true DICOM calibration, a backlight sensor for luminance control and bonded protective panels. These LCDs are bundled with high-speed graphic controllers and X-CAL calibration

software for automatic DICOM calibration and display quality assurance. The software includes a local agent and network administrative packages.

## DICOM Archiving and Distribution



aycan store by aycan medical systems is a cost-effective, high performance and flexible DICOM archiving and distribution system. Built on more than 10 years of extensive experience in long-term archiving of medical image data, aycan store offers entry-level and scalable archiving systems

that are efficient and reliable and can grow with a business.

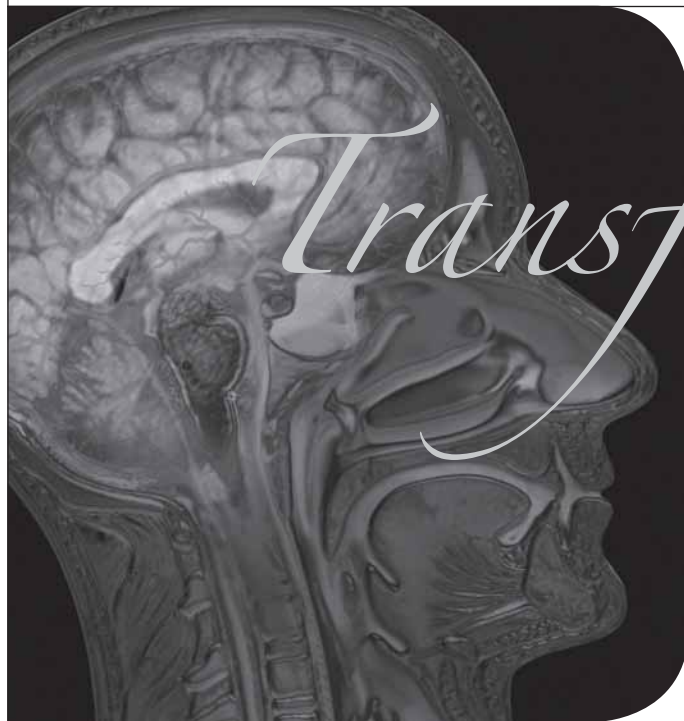
## Online Search Tools and Consult Service

The Mosby-Saunders/Elsevier Imaging Consult provides instant answers to imaging questions. Easy-to-use, powerful online search tools puts answers that busy imaging professionals need right at their fingertips so they can get the right diagnosis with confidence. Comprehensive coverage includes high-quality images and information across all imaging subspecialties and modalities. Tools integrate with PACS and reporting systems, while MD Consult enhances user experience to help professionals get the most out of their investment with improved workflow and more detailed search results.

**ACR**  
AMERICAN COLLEGE OF  
RADIOLOGY

Come See How the ACR Is

[www.acr.org](http://www.acr.org)



*Transforming*  
the Future of Radiology

Check out the ACR's latest offerings at booth #6403A.

Visit ACR's booth #6403A located in the South Building, Hall A, and preview what's new in:

- **Education** — "Test drive" the ACR Case Engine, the custom delivery vehicle for CME courses offered in our state-of-the-art Education Center, and check out the world-class offerings on the ACR Campus Online and other traditional products.
- **Advocacy** — Meet members of our government relations and economics staff and hear how we're looking out for you on the Hill and at the state level.
- **Clinical Research** — Learn more about the ACR's clinical trials conducted through ACRIN® and RTOG®.
- **Quality and Safety** — Gain hands-on experience using eRADPEER™.
- **Membership** — Update your member profile in PRED, our new database designed to provide you with a unique member experience!

### Career-seekers and employers:

Visit the ACR Career Center in Room S105AB to learn about our enhanced services.

**Come be part of the transformation.**



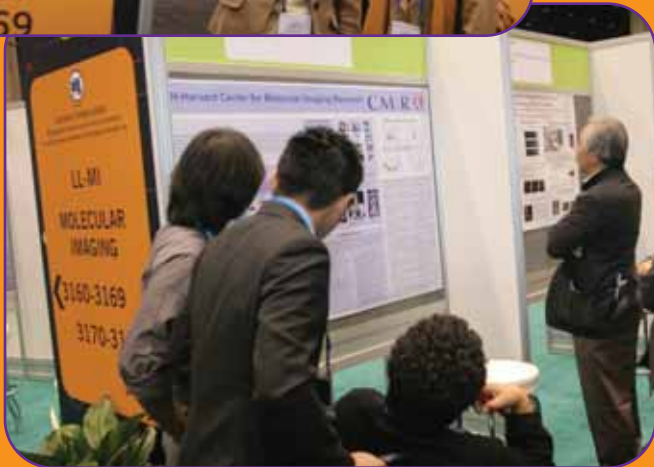
**Molecular Imaging Zone**

# Have you been to the Zone?

Visit the Molecular Imaging Zone  
Lakeside Learning Center  
Hall E

MI education exhibits and posters from:

- Training and Research Programs
- Molecular Imaging Societies
- Government and Funding Agencies



**Meet the Experts Sessions:**

Sunday–Thursday

12:15–12:45 p.m.

12:45–1:15 p.m.

## Patient Entertainment, Noise Reduction Headset



Resonance Technology has added a range of enhancements to its MR-compatible CinemaVision patient comfort audio-video system, which delivers high-quality, all-digital entertainment in the MR imaging environment. Enhancements include a new, powerful audio-phone with enhanced noise-cancellation technology integrated into the device's one-piece headset. The technology minimizes MR gradient noise and enables clear communication between the technologist and patient during scanning. By enhancing the patient scanning experience, CinemaVision helps sites reduce aborted and repeat procedures as well as delays in exam completion due to patient movement. Some difficult-to-scan patients may even be able to avoid sedation.

## Data Migration Services



Laitek's Migrattek Version 2 Advanced Migration Services deliver rapid, accurate and affordable migration of archived DICOM and related data. The new version extends Laitek's proven Rapid Migration technology to shorten migration timelines and enhance services during system transitions. It transfers data from a legacy PACS archive to the new system at speeds five to 10 times faster than competing solutions. Migrattek Version 2 streamlines setup and validation components while providing transparent access to data during the migration. The new offering also will support ongoing clinical workflow with no slow-down throughout the data migration process and transition from one PACS application to another.

## Retrofit CCD-DR System



JPI America launches the X-Caliber, a charge-coupled device digital radiography (CCD-DR) retrofit solution. X-Caliber can be combined with an existing

X-ray and generator to make an efficient and cost-effective digital upgrade for the clinic or small hospital. The detector produces high quality images at low dosage using a cesium iodide scintillator and a JPI designed custom grid. Included with the X-Caliber are the acquisition computer and monitor, additional viewing software license, generator interface kit and custom detector stand. The solution is easy to install and requires little maintenance. Free installation, operation and sales training will be provided for certified dealers.

## Dedicated MR Imaging



ONI Medical Systems offers a powerful and enhanced dedicated MR imager, the MSK Extreme® 1.5 T. It features a high-field 1.5 T magnet and the fastest, most powerful gradient system found on any clinical MR system. The

MSK Extreme 1.5 T offers advanced technology combined with the fastest region of interest, patient comfort, small footprint and ease of use. It provides extreme visualization of details with a gradient strength of 70mT/m and a slew rate of 200 T/m/s, extreme accuracy with v-spec coils™ technology—six dedicated MSK coils—and extreme control with sweet spot imaging.

## Compact Cardiac Camera



C-Quest™ by MEDX is a compact, dual-head, dedicated cardiac camera capable of fitting in an 8' x 10' room. With its open-gantry design, the C-Quest is patient friendly and can accommodate patients up to 450 lbs. The C-Quest features an intuitive touch screen for rapid scan setup, fixed 90-degree digital detectors and lightweight collimators that can be easily changed by hand. The C-Quest is controlled by the newly updated and user-friendly NuQuest® acquisition and processing workstation for superior cardiac images.

## Color Doppler System



Chison Medical Imaging's ProVision 80 is an affordable high-end shared-service color Doppler system. It covers abdominal, OB/GYN, cardiac-vascular, small parts, pediatric and musculoskeletal applications. The ProVision 80 offers hundreds of channels, high density probes

with up to 256 elements, tissue harmonic imaging and compound imaging to ensure stunning image quality without compromising frame-rate. The system features a workflow-oriented user interface, front-loaded DVD and USB, floating keyboard, 360 degree-adjustable LCD and four active probe connectors. The system supports CFM, PW, CW, Color-M, TDI, Panoramic, 3D, ECG and DICOM as well as a comprehensive cardiac package.

## Complete Image Mobility



Medical Insight's EasyViz system is a full-featured DICOM viewer for the enterprise that works with any PACS or long-term archive. The system uses server-side computing and adaptive streaming to add complete mobility to clinical workflow. By integrating seamlessly with EMR systems or third-party applications, EasyViz enables clinicians to access even the largest CT scans on any device in seconds via secure TLS connections from inside or outside the healthcare enterprise. Only 20 minutes are required to learn to use EasyViz and the ultra-thin-client requires no IT support on the client device.

## X-ray Positioner



The SU-3000 Compact U-arm by Acceleray AG, an IMIX company, is compact in design and ideal for private office, orthopedic and space-restricted examination

rooms. Featuring dual-speed motorized movements and remote control operation with exam-specific presets, the SU-3000 is capable of easily and efficiently handling all of a busy clinic's imaging needs.

## Wireless MR Infusion System



The MEDRAD Continuum wireless MR infusion system enables the clinician to control a patient's medication infusion during an MR procedure from both inside and outside the scan room. When changes are needed, including flow rate and bolus, or to start or stop the infusion altogether, clinicians can control these parameters without interrupting the MR scan with a new wireless remote display featuring a color touchscreen. This option increases workflow efficiencies

and throughput while enhancing clinician confidence by enabling easy selection from up to nine IV stands, minimizing scan interruptions due to infusion changes and displaying all infusion parameters.

## Disaster Recovery Services

Disaster recovery is the first offering of Merge Managed Services™ by Merge Healthcare. This service provides technology and business continuity peace of mind with efficient and accurate data transmission, backup, storage and recovery—all within a cost-per-study model. During system failure, unplanned downtime or natural disaster, organizations can rely on HIPAA-

compliant back-up and immediate availability of images and information. This solution helps eliminate the high capital cost, maintenance fees, upgrades and staffing typically associated with self-directed data duplication and management. The service is available to any organization and does not require use of Merge's Fusion PACS.

## Document Viewing System



The DeJarnette xDL™ Vision is a Web-based enterprise document viewing system. xDL Vision is designed to provide an

industry standard Web access to DICOM objects (WADO) interface for distributing images and associated documents. The system comprises a WADO server and a WADO viewer. The server provides a WADO interface to the company's xDL vendor-neutral archive and the ability to query and retrieve documents managed by xDL. The viewing application allows the display and manipulation of medical images managed and served up by any WADO server. Similarly, the WADO server component can serve up documents to a WADO viewer of any manufacturer.

## Interoperability Software

MEDxConnect™ System version 2.5 by Compressus is the next generation of the company's Enterprise Systems Integration software solutions. Fully supporting a thin-client environment, the new release fea-

tures a full integration with GE Centricity PACS and PowerScribe speech recognition software as well as significant enhancements that provide seamless connectivity across disparate HIS, RIS, PACS and related information systems. MEDxConnect provides automated interoperability, enabling organizations with disparate systems to function as one virtual enterprise. MEDxConnect indexes, integrates and routes all relevant patient medical information in real time, increasing patient safety, improving physician productivity and supporting practice expansion.

## TECHNICAL EXHIBITION HOURS

Hall A (South Building), Hall B (North Building), Hall D (Lakeside Center)  
 Sunday–Wednesday . . . . . 10:00 a.m.–5:00 p.m.  
 Thursday . . . . . 10:00 a.m.–2:00 p.m.

# Full-Service Teleradiology

24 x 7 Coverage  
 High Quality Final Reports  
 Subspecialty, Nighttime/ED Expertise

Franklin & Seidelmann Subspecialty Radiology (F&S), the largest final report teleradiology provider, gives you access to a large, experienced team of radiologists that includes nationally recognized subspecialty experts and academic leaders.

Our unique blend of high quality reports, collaborative consultations and fast report turnaround enables our clients to increase physician satisfaction, referrals, revenue and productivity; eliminate over reads; and recoup nighttime coverage costs.

Rely on Franklin & Seidelmann to be your single teleradiology partner for subspecialty, nighttime/ED, overflow, and vacation coverage.

*Experience in Millions of Interpretations*

- *Neuroradiology*
- *Musculoskeletal*
- *Body*
- *Nighttime/ED*
- *Cardiac CTA*
- *Breast MR*
- *Oncological*
- *Pediatric*
- *Advanced Training in MRI, MDCT and PET/CT*

Nighttime/ED Final Reports within 30 Minutes

Visit [www.fs-rad.com/radgroups](http://www.fs-rad.com/radgroups) to view our "Final Reports for Radiology Groups" white paper.

*The largest subspecialty teleradiology network and provider of final reports.*

Visit us at RSNA booth #4276, Hall A – South.  
 Ask us about joining our radiology team.

# Franklin & Seidelmann

SUBSPECIALTY RADIOLOGY

www.franklin-seidelmann.com

866-4FSRADS

## RIS Billing Application Upgrades



RIS Concepts introduces robust billing features for both its browser-based enterprise RCI-RIS and Web-based RAD-RIS. RCI-RIS can now post patient payments directly to the RIS with full integration of the information into the RIS Concepts billing application, saving time and minimizing the chance of human error. For radiology groups that not only read but also bill for other facilities, new RAD-RIS features will help ensure similar integrity of the financial processes.

## Upgraded Automated Dictation/Structured Reporting



Integrated Document Solutions introduces Voice2Dox 2.0, the next generation of its

dictation and structured reporting system. Enhancements include the ability to instantly deliver preliminary results to a hospital information system prior to the final report, automated addendums to previously completed reports and the ability to provide a single electronic signature for a group of related studies. Voice2Dox 2.0 also features Snippets, a customized clipboard that injects paragraphs and normal phrases anywhere in a report.

## Cardiac Imaging Option



ZONARE's performance cardiology option for the z.one medical system incorporates Zone Sonography™ technology, premium image quality, performance and features in a compact and efficient system, allowing the same full diagnostic exam that is comparable to those done with large systems. The new option offers one-button image optimization along with continuous focusing that provides diagnostic confidence with each exam. In addition, the new option offers transesophageal echocardiography (TEE) imaging capabilities. The system's streamlined, intuitive user interface allows high versatility with programmable function and mode keys and offers a comprehensive calculation package for all left ventricle analysis and valvular pathologies.

mium image quality, performance and features in a compact and efficient system, allowing the same full diagnostic exam that is comparable to those done with large systems. The new option offers one-button image optimization along with continuous focusing that provides diagnostic confidence with each exam. In addition, the new option offers transesophageal echocardiography (TEE) imaging capabilities. The system's streamlined, intuitive user interface allows high versatility with programmable function and mode keys and offers a comprehensive calculation package for all left ventricle analysis and valvular pathologies.

## Enhanced Remote Reading Solution



BRIT has added new enhancements to the Roentgen Works remote reading service, a workflow solution that enables radiology groups of all sizes to provide outsourced radiology reading services. Advanced technologies such as AJAX and Skype are embedded in Roentgen Works, which includes newly developed tools such as the discordance and urgent findings tools. Roentgen Works will also include BRIT's newly developed integrated voice dictation and transcription solution.

## Medical Image Importer



The Codonics Integrity™ Medical Image Importer imports medical studies from CD or DVD into a PACS system. The Integrity reader can be conveniently located at the receptionist's desk where a patient arrives with their study on disc. The receptionist can immediately import the data by simply inserting the disc into the network appliance where it is automatically read, scanned for viruses and imported. Reconciliation can occur immediately thereafter

or at a later time by the same or different user in the facility, at any network computer with a Web browser.

## Image Processing System

The i5™ is InfiMed's fifth-generation medical imaging technology. Multifunctional flexible architecture allows for integration with various imaging receptors including a wide variety of flat-panel detectors and charge-coupled device cameras. The system also includes a fully integrated generator console with Apache Portable Runtime (APR) support as well as the new InfiVision™ image processing software to provide the best image quality upon initial display. With its proprietary imaging technology, InfiMed's new i5 platform is designed to grow as imaging demands change in the future.

## Software Development Kits



Version 16 of LEAD Technologies, Inc.'s LEADTOOLS software development kits (SDK) offers major enhancements and new features to Medical Imaging SDK, including a powerful medical Web view-

er framework for teleradiology applications, a DICOM PACS module for developers needing to implement any service class user/service class provider in DICOM 2008 specification and a JPEG 2000 Internet protocol client/server application programming interface for streaming high-resolution images over low bandwidth.

North Building  
Hall B  
Stand 7557

When will quantitative measurements cast a better light on the diagnostic process?

Real-Time **SHEARWAVE™ ELASTOGRAPHY** lights the way...

$c_s = \sqrt{\frac{\mu}{\rho}}$

[www.supersonicimagine.com](http://www.supersonicimagine.com)

**DOME** Displays by NDSsi

**Dome, a leading brand of displays for PACS imaging, is now part of NDSsi.** Combined product offerings by Dome and NDSsi will deliver **Medical Visualization** solutions for improved clinical outcomes.

View our latest innovations at **RSNA, Booth #4029** (Hall A) and **Booth #8944** (Hall B)

[www.ndssi.com](http://www.ndssi.com)



ONE

**INTRODUCING SuperPACS™ ARCHITECTURE.** Now you can synchronize disparate PACS systems using your existing infrastructure within a multi-site healthcare network, providing you ONE global worklist no matter where your site or data is located.



SHARE clinical resources and balance radiology workload with ONE rules-based global worklist across all sites. COLLABORATE with peers, clinicians and referring physicians. Diagnose and REPORT quickly with numerous advanced clinical tools and set profiles. Experience common reading and reporting for all sources and formats of data.

**ONE chair. ONE workstation. ONE solution.**

**Carestream**   
HEALTH

Want to find out more?

[it.carestreamhealth.com](http://it.carestreamhealth.com) or  
1-877-865-6325, ext. 655

**RSNA '08** Booth 8342 Hall B, North Building



Advancing insight

## Leading imaging solutions with trust and innovation.

Join Covidien Imaging Solutions at RSNA 2008 to see how we're pioneering innovation. Incorporating RFID technology in the Optivantage™ DH contrast delivery system and Ultraject™ prefilled syringes are just two examples of the advances that have defined our history and set the course for future achievements. We are your comprehensive imaging partner—providing the solutions and knowledge to help physicians make accurate diagnoses to aid in better patient outcomes.

[www.covidien.com](http://www.covidien.com)

**VISIT US AT RSNA 2008 BOOTH #9113**

COVIDIEN, COVIDIEN with Logo and ™ marked brands are trademarks of Covidien AG or an affiliate.  
© 2008 Covidien. All rights reserved.



**COVIDIEN**

*positive results for life™*